

DERBY COUNTY

FOOTBALL CLUB

LIMITED



Willie Carlin

Inside-forward

Willie Carlin was signed from Sheffield United earlier this year for a Club record fee of over £60,000. Willie started his career with Liverpool, moving to Halifax and later to Carlisle. A marvellous ball player and a glutton for work.



FOOTBALL LEAGUE CUP—5th ROUND

DERBY COUNTY

VERSUS

SWINDON TOWN

WEDNESDAY, 30th OCTOBER, 1968

KICK-OFF 7.30 p.m.

official programme — ninepence

QUEEN'S HALL METHODIST MISSION
LONDON ROAD (Opp. D.R.I.)

- ★ **POPULAR SUNDAY SERVICES**—10.45 a.m. & 6.30 p.m. Full mid-week programme
Modern Youth Centre (Coffee Bar etc.) open each evening
- ★ **Saturday 16th November, 7.00 p.m.—“SONGS FROM THE SHOWS”**
John Dobson (*Royal Opera House, Covent Garden*), Mary Illing, David Winnard
- Sunday, 17th November, 6.30 p.m., Same Stars in **“SONGS OF PRAISE”**

ENJOY THE QUEEN'S HALL — THE CHURCH THE MEN GO TO

**BRITAIN'S
LARGEST
CARAVAN
DISPLAY**

Special Display of: Holiday Homes
Mobile Homes & Touring Caravans

Always open

DON AMOTT CARAVANS

The Midlands largest Caravan Display

Telephone: Etwall 2665

now in full swing at Egginton Junction Station

Halfway Derby—Burton-on-Trent (A.38) Over flyover to Hilton

OLYMPIA GARAGES *Car Sales*

DEMONSTRATIONS
WITHOUT OBLIGATION

Derby's largest stockists of

NEW FIAT CARS

ALFRETON ROAD, DERBY

Tel. 46589



THE SIGN OF SERVICE

LINCA

(DERBY) LIMITED



MERCHANTS TO THE BUILDING
PLUMBING and ALLIED TRADES



BROOK STREET - DERBY

TELEPHONE 40104 (5 Lines)

OFFICIAL PROGRAMME OF
DERBY COUNTY
FOOTBALL CLUB LIMITED
BASEBALL GROUND · DERBY

Telephone: 44850

Telegrams: FOOTBALL, DERBY

President: **SIR ROBERTSON KING, K.B.E.**

Vice-Presidents: **F. B. WALTERS, H. PAYNE**

Chairman: **S. C. BRADLEY**

Directors: **S. LONGSON, K. C. TURNER, C.B.E., R. KIRKLAND**

Secretary: **MALCOLM BRAMLEY**

Manager: **BRIAN CLOUGH**

Trainer: **JACK BURKITT** Asst. Manager: **PETER TAYLOR**

FROM THE BOARDROOM

WITH our eyes mainly set on promotion, the success we have achieved in the League Cup is nevertheless magnificent and I should like to take this opportunity of paying tribute to the Manager and the players for the success they have had in the Competition.

Not for many years have Derby Supporters been treated to such a feast of football.

After a hard-fought match with Birmingham City last Saturday, we are faced with formidable opposition in the League Cup from Swindon Town, current leaders of Division III, who have already eliminated First Division Coventry City.

It was a body blow to us when Alan Hinton received his injury and at this stage it is impossible to tell how long he will be out of the team. Tough luck, Alan, hope to see you back soon!

Now just a few words of thanks to Peter Taylor, Assistant Manager, and Jack Burkitt, our trainer. They have worked untiringly to keep the team up to concert pitch.

Here's hoping for another good result tonight.

SYDNEY BRADLEY, Chairman.



Introducing Our Visitors

SWINDON TOWN, to reach this stage in the League Cup have had to beat Torquay at home 2—1, Bradford City, after a replay, 4—3, Blackburn Rovers, at home, 1—0, and, more recently, Coventry, at home, after a replay, 3—0, so it is obvious that they will be no push-over. Leaders of the Third Division, they are obviously destined for higher things on their present showing.

They have produced such well-known players as Mike Summerbee, now with Manchester City, Ernie Hunt, now with Coventry City, and the much sought after Don Rogers, currently quoted as in the £100,000 class.

The last occasion they visited the Baseball Ground was in the 1964-5 season when Derby won 4—1. That season they were relegated.

Pen-pictures of the Swindon Town players:

DOWNSBOROUGH, Peter, goalkeeper. Born Halifax. Signed in August, 1965 from Halifax Town where he was a product of local football. A fearless agile player who has done much to strengthen the Town's defence. 5 ft. 10 in. 13 st. 2 lb.

JONES, Roy, goalkeeper. Born Clacton-on-Sea. Signed for the Club in October, 1967 after obtaining his release from the R.A.F. Made nineteen appearances for the Division III side last season. 5 ft. 11 in. 11 st. 12 lb.

continued on page 5

O. DICKENSON & SON (Derby) LTD.

All Repairs and
Renovations
to Old Property

**Builders and
Plumbers**

Specialists in
Erecting
Industrial Buildings

5 MILE ASH LANE, DARLEY ABBEY, DERBY Tel. 58302

**DON'T
FORGET**

Double Diamond
Beers

The CAMBRIDGE Hotel

Dairyhouse Road

OPEN BEFORE AND AFTER THE MATCH

Mine Host: A. S. Atwal

Lucky Programme

Number Competition

Nº 14360

LISTEN at half-time for today's 'Lucky Number'. This will be given over the loudspeaker and the holder of the programme bearing the number should apply to the Publisher's Office, 28 Friar Gate, Derby, for two free tickets for the next first team home match. If you live out of town you may post your programme to the Publisher's Office enclosing a stamped addressed envelope and your tickets will be forwarded immediately.



MOTORWAY SALES (Derby) LTD.

STATION APPROACH, FRIAR GATE, DERBY

Area distributors for

NEW AND USED CARS SUPPLIED
TERMS • INSURANCE • EXCHANGES

ŠKODA

WILLIAM BRICKNELL LTD



THREE-PIECE SUITES, EASY CHAIRS, ETC.
REPAIRED, UPHOLSTERED & RE-COVERED

Works and Showroom

70 LODGE LANE, DERBY

Telephone: Derby 47757

*for
"CUSTOM-
BUILT"
Furniture*

continued from page 3

DAWSON, Owen, right-back. Born Hatfield. Joined the Club from Portsmouth in June, 1962. He was a regular First team player until he was unlucky to lose his place through injury. A fast tenacious player. He was a former Youth International. 5 ft. 9 in. 11 st 12 lb.

THOMAS, Rod, full-back. Born Glyncoirwg. A former youth player with the Club. He was signed from Gloucester City in July, 1964. Took over the full-back position last season when Owen Dawson was injured, and maintained his position throughout the season. Has gained Welsh Under-23 Caps and Full Welsh Caps. 6 ft. 12 st. 10 lb.

BUTLER, Joe, full-back. Born Newcastle. Joined Swindon from Newcastle United in August, 1965 where he graduated to the senior ranks through the Club's Junior Team. A tenacious player whose speed and ability amply make up for his lack of inches. 5 ft. 7 in. 11 st.

TROLLOPE, John, left-back. Born Swindon. A local player who joined the Swindon Ground Staff from school. He was selected for the First team at the beginning of the 1960-1 season when he was just sixteen years old, and was ever-present during that season. Together with his partner that year, who was also sixteen, they were the youngest full-backs ever to appear as a pair in League Football. During last season he completed 322 consecutive League appearances for the Club. 5 ft. 10 in. 11 st. 13 lb.

MORGAN, Keith, right-half. Born Trowbridge. A tall fast attacking player who progressed through the Club's Junior teams after joining Swindon Ground Staff at the age of sixteen. He was formerly the Club Captain but was unlucky to lose his First team place during season 1966-7 through injury. 6 ft. 1 in. 13 st.

SMART, Roger, right-half or inside-forward. Born Swindon. Another local player who joined the Club direct from Swindon Schoolboys Team. At seventeen he was appearing regularly at centre-forward in the Reserve team, but he excels as a deep-lying inside-forward. A versatile player who is able to play at wing-half. 5 ft. 11 in. 12 st. 1 lb.

GILES, Jimmy, centre-half. Born Kidlington. A versatile player who has played at centre-forward for the *Robins* where he proved to be a strong forceful leader, and also centre-half where his strength did much to add to the defence. 6 ft. 12 st. 11 lb.

BURROWS, Frank, centre-half. Born Larkhall, Scotland. Joined the Club from Scunthorpe United for whom he played three seasons. Formerly with Raith Rovers. A strong defender who has made his mark in Third Division football. 6 ft. 1 in. 12 st. 8 lb.

HARLAND, Stan, left-half. Born Liverpool. Was signed from Carlisle United in July, 1966. Formerly with Everton and Bradford City. He has been a regular choice at left-half since making his debut at the beginning of the 1966-7 season. A forceful player who likes to go forward to back up the forwards in attack. 6 ft. 12 st. 5 lb.

ROGERS, Don, outside-right or left. Born Paulton. Probably the most sought after player in the team. He was signed by Swindon when only fifteen and quickly came to the fore. Gained many England Youth International Caps and subsequently played in the England Under-23 International team. Was the Club's top goal scorer last season with 28 goals. 5 ft. 10 in. 12 st. 10 lb.

HEATH, Don, outside-right. Born Stockton. Signed from Norwich in September, 1967. Formerly with Middlesbrough where he served as an apprentice professional. A hard-working winger who is also able to play in the inside-forward position. 5 ft. 8 in. 11 st. 8 lb.

PENMAN, Willie, inside-forward. Born Wemyss, Fife. Signed from Newcastle United in September, 1966 for a considerable fee. Formerly with Glasgow Rangers. A clever ball-playing inside-forward who has also appeared at centre-forward with the Club. 5 ft. 8 in. 10 st. 10 lb.

NOBLE, Peter, inside-forward. Born Sunderland. Joined the Club from Newcastle in January, 1968 for whom he played for four years. Prefers to play an attacking role. 5 ft. 8 in. 10 st. 10 lb.

SMITH, John, inside-forward. Born London. Signed from Torquay United in June, 1968 and previously played for Leyton Orient, West Ham United, Tottenham Hotspur and Coventry. Former England Under-23 International. 5 ft. 8 in. 13 st.

JONES, Chris, centre-forward. Born Altrincham. A close season signing from Manchester City for which club he played in their touring team in America. 5 ft. 11 in. 11 st. 12 lb.

BAILEY, John, inside-forward. Born Oxford. Joined the Club in August, 1966 as an apprentice professional and signed as a professional in August, 1968. A strong player who has appeared in many positions for the Football Combination side. 5 ft. 11 in. 12 st.

DERBY COUNTY DEVELOPMENT ASSOCIATION

WINNING NUMBERS, WEEK No. 23 (Blue tickets)

Tuesday £100 01193
Wednesday 5 at £10 05261, 10070, 04637, 00629, 13845

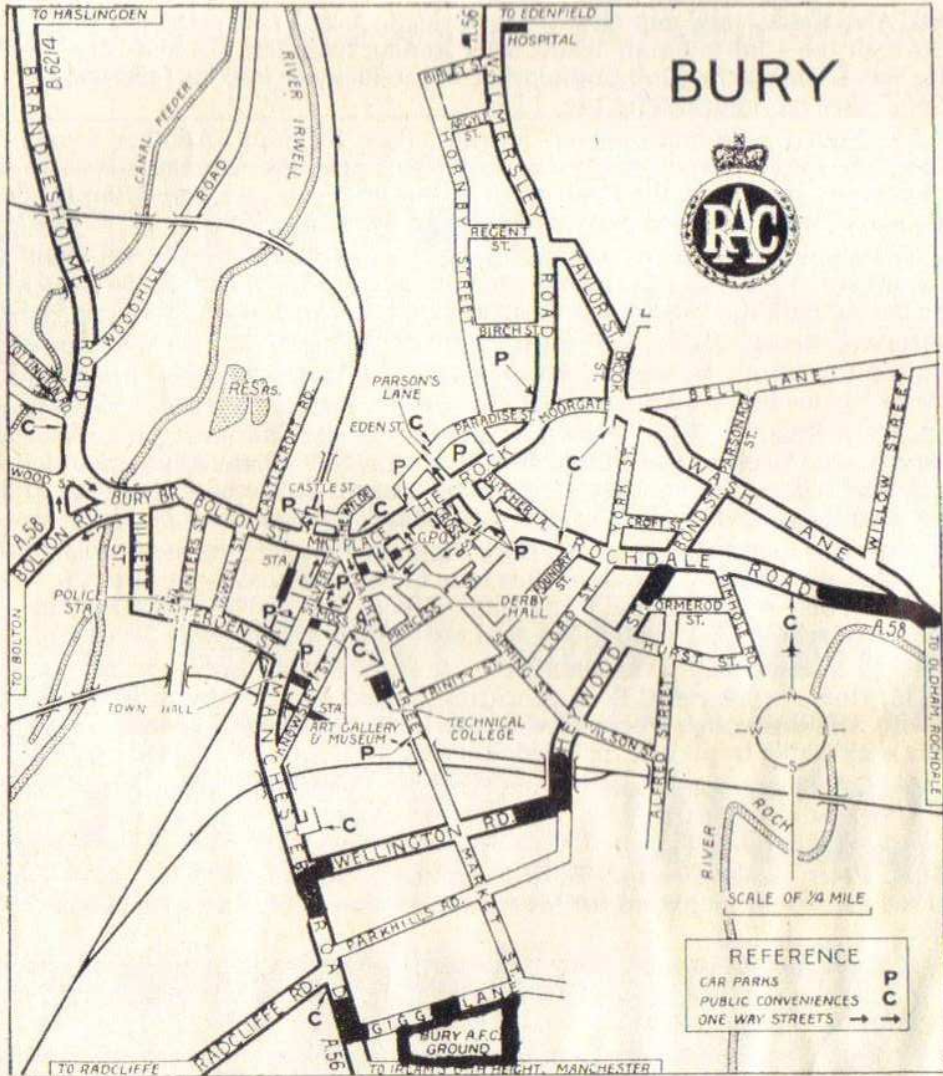
RAMS SUPPORTERS' INFORMATION DESK

TICKETS AND ROUTE FOR AWAY MATCHES

For the guidance and assistance of members we publish below details of prices and where to apply for the next away matches. Supporters are advised to enclose the correct money and a self-addressed envelope when making applications for tickets to the clubs listed.

We also publish routes to the respective grounds as supplied by the R.A.C. R.A.C. members requiring personal and prompt service for any motoring matter should apply to R.A.C. County Office, 21 Gregory Boulevard, Nottingham. Tel. 63331.

BURY v. DERBY COUNTY
SATURDAY, 2nd NOVEMBER, 1968
 Seats can be booked in advance at 10/6
 Apply: GIGG LANE, BURY. Tel. 061 BUR 4881



ROUTE TO BURY

DERBY		
A52 to Ashbourne, A515 to Buxton	..	34 miles
A6 to Chapel-en-le-Frith, A624 through Hayfield to Glossop, A57 to Mottram-in-Longendale, A6018 to Stalybridge, A635 to Ashton-under-Lyme, A627 to Oldham	..	61 miles
A669 to Middleton, A6046 to Heywood, A58 to Bury entering by Rochdale Road (See plan). Turn left Heywood Street, Wellington Road, turn left Manchester Road and left into Gigg Lane.	..	
BURY FOOTBALL GROUND	..	71 miles

LEADING GOAL SCORERS

(Including League, League Cup and European Cups)

DIVISION I

Greaves, Spurs	18
Hurst, West Ham	16
Astle, West Brom A.	14
Law, Manchester U.	13
Robson, B., Newcastle	13
Moore, Nottingham F.	13
Ball, Everton	12
Crawford, Ipswich	12
Baldwin, Chelsea	11
Whitham, Sheffield W.	11
Peters, West Ham	11
Casper, Burnley	10
Royle, Everton	10

DIVISION II

Curran, Norwich	20
Irvine, Preston	14
Greenhoff, Birmingham	11
Toshack, Cardiff	10
Jackson, C., Crystal P.	10
Wagstaff, Hull	9
Wharton, Bolton	8
Hector, Derby	8
Hinton, Derby	8

DIVISION III

Lewis, Luton	11
Rogers, Swindon	10
Yardley, Tranmere	10
Mulvaney, Barrow	9
Sheffield, Luton	9
Andrews, Southport	9
East, Bournemouth	8
Yeo, Gillingham	8
Halom, Orient	8
Biggs, Walsall	8

DIVISION IV

Ham, Bradford C.	13
Talbot, Chester	11
Jeffrey, Doncaster	11
Hall, Peterborough	11
Banks, Exeter	10
Terry, Brentford	9
Regan, Doncaster	9
Buck, Newport	9
Melledew, Rochdale	9
Chapman, Port Vale	8
Heath, Scunthorpe	8
Kerr, Scunthorpe	8

CARDIFF CITY v. DERBY COUNTY

SATURDAY, 16th NOVEMBER, 1968

Seats can be booked in advance at 15/-, 12/6 and 7/6.

Apply—NINIAN PARK, CARDIFF. Tel. Cardiff 26237

All leading makes of typewriters

INCLUDING OLYMPIA, IMPERIAL, ADLER

12 makes of portable typewriters stocked. Home demonstrations with pleasure.

Adding and Calculating machine specialists. Photo-copying equipment.

JAMES HARWOOD LTD.

DUCKWORTH SQUARE, DERBY. Tel. 40474 (4 lines)

Complete Office Furnishers

'The House of Dickerson'

Established over 90 years

J. H. DICKERSON

Biological Surgical Specialists

Consult us for Family Planning

Free Advice, Booklets and Price Lists

10 STRAND ARCADE · DERBY

NOTE—This is our only address

Telephone 43645

Houses · Properties
FOR SALE
 Maximum Mortgages

Roy Snelson
 PROPERTY BUREAU LTD.
 STRAND & HAYMARKET · DERBY
 Telephones 40342/3 (2 lines)

HOW THEY STAND

LEAGUE—DIVISION II

Up to and including Saturday, 26th October
 Goals

	P	W	D	L	F	A	PTS
Middlesbrough	16	10	2	4	26	19	22
Blackburn	16	8	5	3	22	14	21
DERBY COUNTY	16	8	5	3	16	11	21
Millwall	16	8	4	4	29	19	20
Hull	16	6	7	3	23	18	19
Charlton	16	7	5	4	23	22	19
Crystal P.	16	7	4	5	29	24	18
Huddersfield	16	7	4	5	23	19	18
Blackpool	16	5	7	4	19	15	17
Preston	16	5	7	4	17	15	17
Bolton	16	6	4	6	26	22	16
Sheffield U.	16	6	4	6	20	20	16
Norwich	16	6	3	7	24	22	15
Cardiff C.	16	6	3	7	23	26	15
Bury	16	4	6	6	25	30	14
Bristol C.	16	2	10	4	13	17	14
Birmingham	16	6	1	9	32	34	13
Portsmouth	16	3	7	6	19	21	13
Carlisle	16	3	6	7	13	24	12
Oxford	16	3	5	8	12	21	11
Aston Villa	16	2	7	7	12	24	11
Fulham	16	2	6	8	13	23	10

LEAGUE—DIVISION III

Up to and including Saturday, 26th October
 Goals

	P	W	D	L	F	A	PTS
SWINDON	14	9	3	2	19	8	21
Luton	15	9	2	4	29	14	20
Bournemouth	15	9	2	4	24	12	20
Barrow	15	9	2	4	24	19	20
Watford	15	8	4	3	18	8	20
Torquay	16	9	2	5	27	16	20
Tranmere	16	8	2	6	22	22	18
Rotherham	15	6	5	4	20	17	17
Plymouth	16	7	3	6	20	17	17
Stockport	15	6	5	4	24	22	17
Reading	15	6	4	5	25	19	16
Northampton	13	5	4	4	14	13	14
Mansfield	15	5	4	6	22	21	14
Bristol R.	15	5	4	6	24	27	14
Barnsley	16	4	6	6	19	22	14
Walsall	16	3	7	6	16	18	13
Southport	15	6	1	8	24	26	13
Hartlepool	15	3	7	5	9	21	13
Orient	14	3	6	5	19	24	12
Shrewsbury	15	4	4	7	13	21	12
Brighton	16	4	4	8	21	28	12
Gillingham	15	4	3	8	19	26	11
Crewe	15	3	4	8	21	28	10
Oldham	15	1	2	12	9	34	4

APPEARANCES AND GOAL SCORERS, 1968-69

	1st Team			Goals			2nd Team	Gls.
	L	FL	FA	L	FL	FA		
Barker	7	1	—	2	1	—	—	—
Blair	—	—	—	—	—	—	3	—
Bostock	—	—	—	—	—	—	8	—
Boulton	—	—	—	—	—	—	15	—
Butlin	—	—	—	—	—	—	15	6
Carlin	12	4	—	1	—	—	—	—
Daniel	—	—	—	—	—	—	11	—
Durban	11	5	—	1	1	—	2	—
Ford	—	—	—	—	—	—	13	—
Green	16	6	—	—	—	—	—	—
Hector	16	6	—	4	4	—	—	—
Hinton	16	6	—	3	5	—	—	—
Ireland	—	—	—	—	—	—	3	—
Jones	—	—	—	—	—	—	15	—
Kane	—	—	—	—	—	—	2	—

	1st Team			Goals			2nd Team	Gls.
	L	FL	FA	L	FL	FA		
McFarland	16	6	—	2	—	—	—	—
McGovern	—	—	—	—	—	—	7	1
MacKay	16	6	—	1	—	—	—	—
O'Hare	15	6	—	2	—	—	—	—
Parr	—	—	—	—	—	—	10	1
Patrick	—	—	—	—	—	—	1	—
Rhodes	—	—	—	—	—	—	15	—
Richardson	2	1	—	—	—	—	10	1
Robson	16	6	—	—	—	—	—	—
Stewart	4	2	—	—	—	—	9	—
Stone	—	—	—	—	—	—	12	1
Walker	15	6	—	1	—	—	—	—
Webster	14	5	—	—	—	—	—	—
Wright	—	—	—	—	—	—	13	—

PORTERS' QUALITY FIRST
 OF DERBY
 MOISTURE TESTED
PIGEON FOODS

MIXTURES per cwt.
 Flyon Racing Mixture 85/-
 Economy Mixture 77/6
 Popular Mixture 65/-
 Tumbler Mixture 60/-
 All grain specially selected
 cleaned and polished. No dust
 No waste

CASH WITH ORDER

For quantities of 3 cwt.
 and over 2/- cwt. less

Free Delivery Local Area

CURZON ST., EAST ST., PEAR TREE RD., LONDON RD., 12 SIDDALS RD.

DICK JOELL MOTORS

For New or Guaranteed Second Hand Cars

Visit us on your way to or from the match at

108 OSMASTON ROAD, DERBY

Telephone 46369

DERBY COUNTY

White Shirts, Black Shorts

Right

Left

1

Les
GREEN

2

Ron
WEBSTER

3

John
ROBSON

4

Alan
DURBAN

5

Roy
McFARLAND

6

Dave
MACKAY

8

Willie
CARLIN

10

Kevin
HECTOR

7

Richie
BARKER

9

John
O'HARE

11

Jim
WALKER

Referee:

Mr. K. HOWLEY
(Billingham)



Linesmen:

Mr. T. R. Mason (Oswestry)
RED FLAG

Mr. G. Earnshaw (Shepley)
ORANGE FLAG

Don
ROGERS
11

John
SMITH
9

Don
HEATH
7

Peter
NOBLE
10

Roger
SMART
8

Stan
HARLAND
6

Frank
BURROWS
5

Willie
PENMAN
4

Rod
THOMAS
3

Joe
BUTLER
2

Peter
DOWNSBOROUGH
1

Left

Right

SWINDON TOWN

Red Shirts, White Shorts

Substitutes—BUTLIN (Derby)

DAWSON (Swindon)

E. H. PICKFORD & CO LTD

 **ROOTES**
main dealer

Humber, Hillman, Sunbeam,
Singer, Commer, Dodge

DUFFIELD ROAD, DERBY Tel. 47007

WHITEHALL MOTORS



May we quote
you for your
new Vauxhall



Repairs, Tyres,
Accessories,
Cars resprayed

VAUXHALL RETAIL DEALERS

Also **BEDFORD LIGHT VANS**

WHITEHALL MOTORS

BURTON ROAD, LITTLEOVER

Tel.: Derby 23017 & 22914

HALF-TIME SCORE BOARD

A	TOTTENHAM SOUTHAMPTON		J		
B	BURNLEY CRYSTAL P.		K		
C			L		
D			M		
E			N		
F			O		
G			P		
H			Q		

DAKS

YOU WILL BE WELL SUITED

We've always something new to show you!

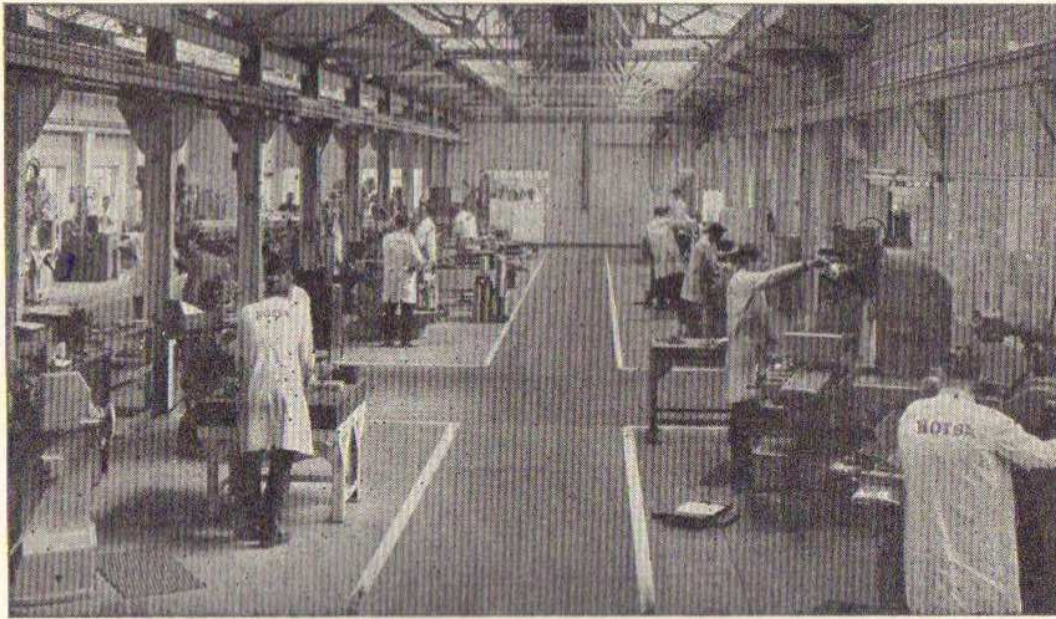
SUITS, SPORTS JACKETS AND TROUSERS

probably the largest selection in Town

SYDNEY BRADLEY LTD

Only Address **EAST STREET, DERBY**

Phone 42008



***In the village of Aston-on-Trent
there is a factory***

Notsa Engineering Company Limited is hardly the type of Company one would expect to find in such rural surroundings, but founded in 1943, the company has made great strides and today is quite famous in its own fields, specialising in precision engineering.

Production ranges from parts for rocket engines to valves for earth moving machinery, aircraft components, parts for satellites, high speed cameras and nuclear reactors.

This in brief is Notsa. ***Enquiries for skilled labour always welcome***

NOTSA
ENGINEERING

COMPANY LIMITED

PRECISION ENGINEERS

LODGE WORKS · ASTON-ON-TRENT, Nr. DERBY

TEL. SHARDLOW 295

STATISTICS — 1967-1969

1968-69					1967-68			
Date	Opponents	Re-sult	Goal Scorers	Atten-dance	Date	Re-sult	Goal Scorers	Atten-dance
17 Aug	Blackpool ...	1-1	O'Hare	24,760	4 May	1-3	Robson	20,635
28	Hull City ...	2-2	Hector, Barker	24,650	20 Apr	1-2	Richardson	15,711
31	Oxford Utd....	2-0	O'Hare, McFarland	21,737				
7 Sept	Aston Villa ...	3-1	Hector 2, Hinton	23,723	2 Sept	3-1	Durban 2, Hector	22,967
18	Fulham ...	1-0	Hinton	26,771				
21	Millwall ...	1-0	Durban	25,000	7 Oct	3-3	Hector, o.g., Saxton	23,609
12 Oct	Preston ...	1-0	Hinton	27,146	15 Apr	1-2	Hinton	17,783
26	Birmingham ...	1-0	Carlin	34,218	4 Nov	2-2	Barker, Durban	25,484
9 Nov	Charlton ...	-			19 Aug	3-2	o.g., Hector, O'Hare	19,412
23	Carlisle ...	-			18 Nov	0-1	—	20,850
7 Dec	Norwich ...	-			9 Mar	1-1	Barker	18,644
21	Portsmouth ...	-			30 Sept	0-1	—	27,043
26	Middlesbro' ...	-			2 Dec	2-4	Hector, O'Hare	20,381
11 Jan	Bury ...	-						
1 Feb	Cardiff ...	-			3 Feb	3-4	Hinton, Hector, Durban	18,096
15	Crystal Palace	-			23 Dec	1-1	Durban	20,224
1 Mar	Blackburn ...	-			30 Dec	2-2	Hector, Durban	19,064
15	Huddersfield	-			21 Oct	1-0	Barker	23,950
5 Apr	Bolton ...	-			23 Mar	2-1	Hinton, O'Hare	16,054
7	Sheffield U. ...	-						
19	Bristol C. ...	-			6 Apr	3-1	Hector, Barker 2	15,938
	Plymouth ...	-			16 Sept	1-0	o.g.	21,516
	Rotherham ...	-			27 Sept	4-1	Hughes, Hector 2, O'Hare	28,251
	Q.P.R. ...	-			17 Feb	4-0	Hector, Hinton, Stewart, McFarland	22,854
	Ipswich ...	-			2 Mar	2-3	Hector, Barker	20,723

AVERAGE ATTENDANCE 1967-8 20,635
 " " " 1968-9 (To Date) 26,645
 (INCLUDING F.L. CUP MATCHES)



MERCEDES-BENZ

The car with built-in safety and years of pioneering has made Mercedes-Benz a name of renown
 Demonstration without obligation with any model

Trade enquiries welcome

**Greaves
 and Welch**

CATHEDRAL ROAD, DERBY · 48969, 48318

Club Notes

WELL DONE, WILLIE! Wee Willie Carlin, the little fellow himself, slotted home his first goal for Derby County to win both points for the *Rams* in the home game against Birmingham City.

A 1—0 victory keeps us nicely positioned near the head of the Division II table . . . so we should really start going places once the League Cup is out of the way and we can concentrate on winning promotion!

The strain of playing two matches a week—counting pre-season friendlies, tonight's game is the *Rams'* 26th fixture of the season—is beginning to take its toll but, all things considered, the *Rams* have done wonderfully well so far. They have been fortunate in avoiding serious injury, of course, although Alan Hinton is currently out of action with damaged ligaments in his right knee.

Whatever else, the paying public are showing that they believe in the Club's future. The attendance of 34,218 at the Birmingham game was the best for a Baseball Ground League game since 1949; what a pity that the occasion was marred by acts of hooliganism before and during the match.

DERBY COUNTY SUPPORTERS' ASSOCIATION
DRAW FOR
THE MANCHESTER NOVEMBER HANDICAP
(Run at Doncaster on 26th October, 1968)

Zardia — 16596

A. Baker, 330 Osmaston Road, Derby—£100

Spunyarn — 14261

W. Pojnar, 14 Cedar Road, Castle Donington—£50

Duperion — 13487

B. Cudworth, 34 Chadwick Avenue, Allenton—£30

Lucky Finish — 10521

Miss S. Ford, 61 Clarence Road, Derby—£20

Specialists in construction and surfacing of

ROADS, CAR PARKS, PLAYGROUNDS,
TENNIS COURTS, Etc.

Derby Pavings
W. H. NORTHBRIDGE (DERBY) LTD.



RAYNESWAY · DERBY · Telephone 71806/7

FIXTURES—SEASON 1968-9

COPYRIGHT THE FOOTBALL LEAGUE LTD., 1968

SECOND DIVISION

Date 1968	Opponents	Ground
Aug. 10 Sat.	Blackburn Rovers	a 1-1
Aug. 14 Wed.	CHESTERFIELD F.L.C. 1st Rd.	h 3-0
Aug. 17 Sat.	BLACKPOOL	h 1-1
Aug. 20 Tues.	Sheffield United	a 0-2
Aug. 24 Sat.	Huddersfield Town	a 0-2
Aug. 28 Wed.	HULL CITY	h 2-2
Aug. 31 Sat.	OXFORD UNITED	h 2-0
Sept. 4 Wed.	STOCKPORT F.L.C. 2nd Rd.	h 5-1
Sept. 7 Sat.	ASTON VILLA	h 3-1
Sept. 14 Sat.	Bristol City	a 0-0
Sept. 18 Wed.	FULHAM	h 1-0
Sept. 21 Sat.	MILLWALL	h 1-0
Sept. 25 Wed.	Chelsea F.L.C. 3rd Rd.	a 0-0
Sept. 28 Sat.	Bolton Wanderers	a 2-1
Oct. 2 Wed.	CHELSEA F.L.C. 3rd Rd. Replay	h 3-1
Oct. 5 Sat.	Middlesbrough	a 0-0
Oct. 9 Wed.	Hull City	a 0-1
Oct. 12 Sat.	PRESTON NORTH END	h 1-0
Oct. 16 Wed.	Everton F.L. Cup, 4th Round	a 0-0
Oct. 19 Sat.	Portsmouth	a 1-0
Oct. 23 Wed.	EVERTON F.L.C. 4th Rd. Replay	h 1-0
Oct. 26 Sat.	BIRMINGHAM CITY	h 1-0
Oct. 30 Wed.	SWINDON T. F.L.C., 5th Rd.	h —
Nov. 2 Sat.	Bury	a —
Nov. 9 Sat.	CHARLTON ATH.	h —
Nov. 16 Sat.	Cardiff City	a —
Nov. 20 Wed.	F.L. Cup, Semi-final	—
Nov. 23 Sat.	CARLISLE UNITED	h —
Nov. 30 Sat.	Crystal Palace	a —
Dec. 4 Wed.	F.L. Cup, Semi-final	—
Dec. 7 Sat.	NORWICH CITY	h —
Dec. 14 Sat.	Preston North End	a —
Dec. 21 Sat.	PORTSMOUTH	h —
Dec. 26 Thur.	MIDDLESBROUGH	h —
Dec. 28 Sat.	Birmingham City	a —
1969		
Jan. 4 Sat.	F.A. Cup, 3rd Round	—
Jan. 11 Sat.	BURY	h —
Jan. 18 Sat.	Charlton Ath.	a —
Jan. 25 Sat.	F.A. Cup, 4th Round	—
Feb. 1 Sat.	CARDIFF CITY	h —
Feb. 8 Sat.	Carlisle Utd. F.A. Cup, 5th Rd.	a —
Feb. 15 Sat.	CRYSTAL PALACE	h —
Feb. 22 Sat.	Norwich City	a —
Mar. 1 Sat.	BLACKBURN R. F.A. Cup, (6)	h —
Mar. 8 Sat.	Blackpool	a —
Mar. 15 Sat.	HUDDERSFIELD T. F.L.C. Final	h —
Mar. 22 Sat.	Oxford Utd. F.A. Cup, S-F.	a —
Mar. 29 Sat.	Aston Villa	a —
Apr. 2 Wed.	Fulham	a —
Apr. 5 Sat.	BOLTON WANDERERS	h —
Apr. 7 Mon.	SHEFFIELD UNITED	h —
Apr. 12 Sat.	Millwall	a —
Apr. 19 Sat.	BRISTOL CITY	h —
Apr. 26 Sat.	F.A. Cup Final	—

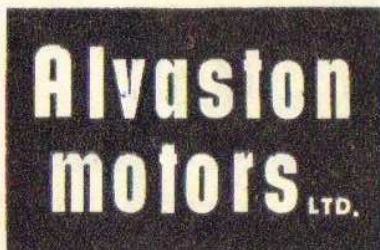
CENTRAL LEAGUE

Date 1968	Opponents	Ground
Aug. 10 Sat.	STOKE CITY	h 0-0
Aug. 14 Wed.	Sheffield United	a 1-1
Aug. 17 Sat.	Blackburn Rovers	a 0-3
Aug. 21 Wed.	LIVERPOOL	h 0-2
Aug. 24 Sat.	BLACKPOOL	h 1-1
Aug. 31 Sat.	Newcastle United	a 0-1
Sept. 7 Sat.	Aston Villa	a 1-1
Sept. 14 Sat.	WOLVERHAMPTON W.	h 1-1
Sept. 21 Sat.	Manchester C.	a 1-4
Sept. 25 Wed.	LEEDS UNITED	h 1-2
Sept. 28 Sat.	BOLTON WANDERERS	h 2-3
Oct. 5 Sat.	NOTTINGHAM F.	h 1-1
Oct. 12 Sat.	Sheffield Wednesday	a 1-0
Oct. 19 Sat.	BURY	h 1-0
Oct. 26 Sat.	Everton	a 0-0
Nov. 2 Sat.	COVENTRY	h —
Nov. 9 Sat.	Huddersfield Town	a —
Nov. 16 Sat.	MANCHESTER UNITED	h —
Nov. 23 Sat.	West Bromwich A.	a —
Nov. 30 Sat.	BURNLEY	h —
Dec. 7 Sat.	Preston North End	a —
Dec. 14 Sat.	SHEFFIELD WEDNESDAY	h —
Dec. 21 Sat.	Bury	a —
Dec. 26 Thur.	Nottingham Forest	a —
Dec. 28 Sat.	EVERTON	h —

1969

Jan. 4 Sat.	F.A. Cup, 3rd Round	—
Jan. 10 Fri.	Coventry	a —
Jan. 18 Sat.	HUDDERSFIELD TOWN	h —
Jan. 25 Sat.	Leeds United	a —
Feb. 1 Sat.	Manchester United	a —
Feb. 8 Sat.	WEST BROMWICH A.	h —
Feb. 15 Sat.	Burnley	a —
Feb. 22 Sat.	PRESTON NORTH END	h —
Mar. 1 Sat.	Stoke City	a —
Mar. 8 Sat.	BLACKBURN ROVERS	h —
Mar. 15 Sat.	Blackpool	a —
Mar. 22 Sat.	NEWCASTLE UNITED	h —
Mar. 29 Sat.	ASTON VILLA	h —
Apr. 5 Sat.	Bolton Wanderers	a —
Apr. 7 Mon.	Liverpool	a —
Apr. 8 Tues.	SHEFFIELD UNITED	h —
Apr. 12 Sat.	MANCHESTER CITY	h —
Apr. 19 Sat.	Wolverhampton W.	a —

THE CHAIRMAN AND DIRECTORS OF DERBY COUNTY F.C. WISH TO ACKNOWLEDGE RECEIPT OF A DONATION OF £25 FROM AN ANONYMOUS SUPPORTER TOWARDS THE COST OF A NEW STAND ON THE POPULAR SIDE OF THE GROUNDE



MORRIS AND WOLSELEY
RETAIL DEALERS

1232 LONDON ROAD

Phone 71847

5-7 EPSOM CRESCENT

ASCOT DRIVE

Phone 44027



Special Excursion

Saturday, 2nd November

BURY

v.

DERBY COUNTY

	Departs	Fare
Derby	1100	13/-
Belper	1130	12/-
Ripley	1115	12/6
Alfreton	1100	13/-
South Normanton ..	1045	13,6

travel
TRENT

BOOK NOW at all Trent offices and agents

The Ogle Roller

MANUFACTURED AND DISTRIBUTED BY

SEYMOURS'

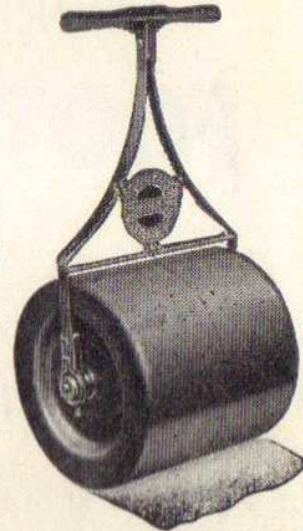
CASTWELL FOUNDRY LTD.

RAYNESWAY, DERBY

Tel. 61984/5

Cast Iron
Rollers
hand &
powered for
all purposes

Weights
from 2 cwts.
to 2 tons



NEXT HOME MATCH—CENTRAL LEAGUE

COVENTRY CITY RESERVES

SATURDAY, 2nd NOVEMBER, 1968 Kick-off 3 p.m.

PRINTING

by

LETTERPRESS

and

OFFSET LITHO

Commercial Stationery

complete stock of all items

including

LETRASET

and

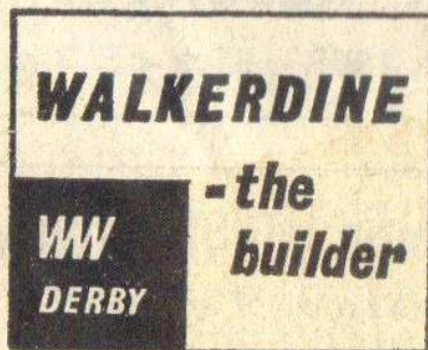
TALLY ROLLS

**DERWENT PRESS LIMITED 90 Nottingham Road
DERBY Phone 49161-2-3**

DERBY EVENING **TELEGRAPH**

Follow the "**Rams**" in the
FOOTBALL SPECIAL

•
LOCAL SPORTS RESULTS
PHOTOGRAPHS AND GOSSIP



CARES

EVEN FOR THE SMALL JOB